



BY APPOINTMENT TO
H.M. THE QUEEN
SUPPLIERS OF 19TH CENTURY PORCELAINS

ALBERT AMOR LTD.



WORCESTER PORCELAIN; THE FIRST PERIOD

37 BURY STREET, ST JAMES'S, LONDON SW1Y 6AU

HER LATE MAJESTY QUEEN ELIZABETH II

This is the first catalogue we have issued since the death of Her Late Majesty Queen Elizabeth II.

Continuing the Royal patronage this company received as holders of Royal Warrants of Appointment to Her Majesty Queen Mary, and Her Majesty Queen Elizabeth The Queen Mother, I was honoured to hold the Royal Warrant as 'Supplier of 18th Century Porcelains to Her Majesty' from 2001 until her death. Never something we took for granted, this has been the most tremendous privilege, particularly to be based in St James's, close to the Royal residences, and surrounded by so many other warrant holders in fields from grocers to hatters.

We send our most loyal greetings to His Majesty King Charles III, and look forward to the Coronation on 6th May.

Mark Law

Wednesday 1st March 2023 - Thursday 16th March 2023

10.00am - 5.00pm Monday to Friday
Saturday and Sunday by appointment

TELEPHONE: 0207 930 2444

WWW.ALBERTAMOR.CO.UK

FOREWORD

WORCESTER PORCELAIN; THE FIRST PERIOD

It is now twenty two years since Albert Amor last staged an exhibition exclusively featuring coloured Worcester porcelain, in 2001; our exhibition then celebrating the 250th anniversary of the Worcester factory in 1751. That exhibition included pieces for sale, and others loaned from private collections, whereas the current exhibition comprises 102 pieces we are pleased to offer for sale, including some pieces returning from the 2001 exhibition, having been in private collections.

The foundation of the current exhibition is pieces from four private collections, augmented by pieces we have been fortunate to acquire for stock with the exhibition in mind. Firstly, we are delighted to have been entrusted by the family of the late John Bell, a well known solicitor for many years in Oxfordshire, with the sale of his collection of Worcester. This group of 27 pieces was formed over a period of thirty five years, with Mr Bell taking tremendous care to select pieces in immaculate condition, and often with impressive provenance. I well remember his visits to Bury Street – Mrs Bell would often head to the Royal Academy, or an art gallery, whilst her husband looked at our stock, and considered carefully what he might acquire. Particular treasures from this collection are the very rare Giles decorated turquoise ground teacup and saucer, number 45, formerly in the Rous Lench Collection, and acquired from us in 1997, the two O’Neale Fable plates, and the superb tea bowl and saucer, number 49, from the celebrated Dudley Service. The large coffee cup and saucer, number 46, from the Zorensky Collection, is of exceptional quality, and the rare plate from the Hope Edwardes Service, number 71, formerly in the Kneller Collection, is something we are delighted to have back, having sold it to Mr Bell in 2001. The Bell Collection also includes a teapot and a coffee cup and saucer with dramatic decoration that although highly prized in the early years of the 20th Century, we now recognise as decorated at a later date. It is, I think, important to record this evolving scholarship and understanding of these pieces we admire.

Following the success of our Spring 2022 Exhibition – Treasures from the Mellor Cobham Collection, we now offer a number of exceptional Worcester pieces from the Collection, as the collectors reshape the collection, and create space for new additions. This allows me to offer two extremely rare pairs of Worcester figures for sale – a pair of gardeners and a pair of Turks – each formerly in the Rous Lench Collection, and an extremely rare Worcester three vase garniture, with ‘dry blue’ decoration. We also offer an important pair of Worcester blue scale ground vases and covers, of the largest size the factory produced, number 87, displaying the very best Worcester bird and insect decoration, and in immaculate condition.

To these treasures we add a group of earlier Worcester pieces, drawn from an American Private Collection, and a long established English Private Collection. Particular rarities include the dry mustard pot and cover, number 1, the Stag Hunt pattern small 'scratch cross' period small mug, number 6, and the extremely rare George III printed mug, commemorating the capture of Cuba, number 25.

Although not a comprehensive record of all styles of Worcester polychrome decoration in the first thirty years of the factory, I do hope this exhibition will serve to remind new collectors of the extraordinary variety of shape and decoration the factory produced, and, whether factory decoration or the work of the Giles atelier, how visually appealing they are, and a joy to live with.

All pieces are available for sale from publication of this catalogue. Do please contact me if I can provide any further details.

I hope that you will enjoy seeing this selection, and that if possible you will visit Bury Street during the course of the exhibition.

Mark Law

London, February 2023



1.
A Worcester dry mustard pot and cover, of baluster shaped 'silver' form, with pointed knop, painted in coloured enamels in Chinese style with the 'Honeysuckle' or 'Hibiscus' pattern, the cover painted with flowers and a bird in flight, 4 $\frac{3}{4}$ " high, circa 1753-54, no mark

Provenance; American Private Collection

Illustrated; John Sandon, The Dictionary of Worcester Porcelain, page 242



2.

A Worcester flared octagonal tea bowl and saucer, finely painted in Chinese famille verte palette with flowering branches and rockwork, and butterflies and other insects in flight, within flower panelled green diaper borders, circa 1754, no mark

Provenance; Zorka Hodgson Collection
John Bell Collection



3.
A Worcester dish, in the form of two overlapping cabbage leaves, finely painted in Chinese famille verte palette with flowering branches and green rockwork, and with insects in flight, 10 ¼" wide, circa 1754-55, no mark

Provenance; John Bell Collection



4.

A Worcester small baluster shaped coffee pot and domed cover, with 'S' scroll handle and turned knob, painted in Chinese style with a version of the Putai pattern, on a feather moulded ground, within iron red and gilt borders, 7 ¾" high, circa 1758-60, no mark

Provenance; John Bell Collection

Exhibited; 18TH Century English Porcelain from Renowned Collections, Albert Amor Limited, 2000, number 16

This coffee pot displays a rare version of the Putai pattern, with two particularly animated figures to the reverse



5.
A rare Worcester flared oval sauceboat, the angular loop handle with scroll thumbpiece, painted in coloured enamels in Chinese style with a long billed bird amidst leaves, within a shield shaped cartouche surmounted by a shell beneath the lip, and arched and fan shaped panels of flowers, leaves and rockwork, the interior painted with trailing flowers and leaves, 6" long, circa 1753-54, no mark

See The Cohen Collection, Albert Amor Limited, 1992, number 3, for another sauceboat of this rare form, but with the bird placed in the central cartouche. Another, but with differing moulding to the current example, is in the Victoria and Albert Museum



6.

A rare early Worcester 'Scratch Cross' small mug or can, of slightly waisted form, with notched loop handle, finely painted in Chinese famille rose style with the Stag Hunt pattern, within two lobed black bordered panels, the interior pencilled with a ruyi head band, 2 3/8" high, circa 1754, an incised line and a cross

Provenance; English Private Collection

See Albert Amor Limited, The Golden Age Exhibition, Masterpieces of 18th Century English Porcelain, 1980, number 19, for a very similar example



7.
A Worcester hexagonal teapot stand, with fluted rim, finely painted in coloured enamels in Chinese style with fishermen in boats, in a river landscape with a pagoda and rocks, 5 ½" wide, circa 1754-56, no mark

Provenance; Dr Paul Riley Collection
American Private Collection

The colour palette of this teapot stand is very unusual



8.

A Worcester small oval pedestal sauceboat, the loop handle with scroll thumbpiece, painted in Chinese famille verte palette with long-necked birds, flowering trees, fences and rockwork, within crisply moulded scroll, flower and leaf cartouches, the interior painted with a flower spray, within a flower panelled green diaper border, 6 ½" long, circa 1754, no mark

Provenance; Dr John Catlin Collection
American Private Collection



9.
A Worcester hexagonal bottle shaped vase, with slightly flared neck, painted in Chinese famille rose style with a young woman, her arms crossed, standing before a fence, trees and rockwork, the reverse painted with a flower spray, 4 $\frac{3}{4}$ " high, circa 1753-54, no mark

Provenance; American Private Collection



10.
A Worcester hexagonal bottle shaped vase, with slightly flared neck, printed and painted in Chinese style with a woman with a fan, standing with a young boy at her side, and with three flying insects, the reverse with a seated woman with a fan, the rim with an iron red band of flowers and leaves, 4 $\frac{3}{4}$ " high, circa 1754-55, no mark

Provenance; American Private Collection



11.

A Worcester coffee cup, of 'U' shape, the 'C' scroll handle with scroll thumbpiece, painted in Japanese Kakiemon style with flowering prunus issuing from 'banded hedges', and a bird in flight, 2 ½" high, circa 1752-53, no mark

Provenance; Gwen and Ronald McKnight Melvin Collection

Simon Spero Exhibition, 2007, number 28

American Private Collection



12.

A Worcester small baluster shaped sparrow beak cream jug, the C' scroll handle with scroll thumbpiece, painted in coloured enamels in Chinese style with a 'strutting' bird, flanked by flowering plants, an insect in flight, 2 ¾" high, circa 1753, no mark

Provenance; American Private Collection



13.

A Worcester lobed baluster shaped cream jug, the moulded 'C' scroll handle with scroll thumbpiece, painted in coloured enamels in Chinese style with a young woman standing before an iron red fence, flanked by a willow tree, plants and rockwork, the reverse painted with a long-tailed bird perched on a flowering branch, issuing from rockwork, 3" high, circa 1753-55, no mark

Provenance; American Private Collection



14.
A Worcester octagonal coffee cup, the 'C' scroll handle with scroll thumbpiece, painted in coloured enamels in Chinese style with a standing Chinese figure, flanked by cases of flowers and leaves, and with flowering plants and insects in flight, 2 ¼" high, circa 1753-54, no mark

Provenance; American Private Collection



15.

A Worcester coffee cup, of quatre lobed form, the 'C' scroll handle with scroll thumbpiece, finely painted in Chinese style in coloured enamels with a 'Long Eliza' figure with a parasol, and two sprays of flowering branches issuing from rockwork, one containing a long-tailed bird, 2 ½" high, circa 1753-54, no mark

Provenance; Simon Spero Collection
American Private Collection



16.

A Worcester wet mustard pot, of slightly flared cylindrical form, the flattened loop handle with scroll thumbpiece, printed in black with the Red Bull pattern, in Chinese style, and picked out in coloured enamels, beneath a black band, 2 ½" high, circa 1756, no mark

Provenance; Knowles Boney Collection
Dr Sonia Parkinson Collection
American Private Collection



17.

A Worcester 'Blind Earl' sweetmeat dish, moulded in relief with leaves, naturalistically picked out in green and yellow, with black veining, the stalk loop handle with rosebud terminal, 6" diameter overall, circa 1758, no mark

Provenance; American Private Collection



- 18.**
A Worcester 'flat bottomed' sauceboat, the loop handle with leaf scroll thumbpiece, painted in Chinese style with a strutting long-tailed bird in a landscape, within a shell, 'C' scroll and flower moulded cartouche, the reverse with a long-tailed bird in a branch, the interior painted with trailing flowers and leaves, 6" long, circa 1752-54, no mark

Provenance; American Private Collection



19.

A Worcester baluster shaped coffee pot and domed cover, of 'Scratch Cross' type, with 'S' scroll handle and turned knob, painted in Chinese famille rose style with a lady seated at a table taking tea, a young boy, a dog and a stand to her right, the reverse painted with two standing figures and a parrot on a stand, the cover painted with objects, 7" high, circa 1754-55, an incised beneath the footrim, below the handle

Provenance; American Private Collection



20.
A Worcester large pedestal sauceboat, the loop handle with scroll thumbpiece, painted in coloured enamels in Chinese style with a lady standing before an iron red trellis fence, in a river landscape, within a scroll and flower moulded cartouche, the reverse with a boat in a river landscape, the interior painted in famille verte palette with trailing flowers and leaves, 8 $\frac{3}{4}$ " long, circa 1754, no mark

Provenance; American Private Collection



21.

A Worcester cabbage leaf shaped dish, with stalk loop handle, painted in Japanese Kakiemon style with a version of the 'Banded Hedge' pattern, with a bird in flight, brown line rim, 8 1/2" wide, circa 1754, no mark

Provenance; Simon Spero

American Private Collection



- 22.**
A good Worcester baluster shaped mug, with notched loop handle, finely painted in purple monochrome with extensive classical ruins in a landscape, the reverse with buildings, the handle with trailing scrolls, 3 1/8" high, circa 1756-58, no mark

Provenance; Selwyn Parkinson Collection

English Private Collection, acquired from Albert Amor Limited 1966



23.

A Worcester globular teapot and cover, with loop handle and turned knop, printed in black by Robert Hancock with 'Peeping Tom' and 'The Flute Lesson', 5 ¼" high, circa 1755, no mark

Provenance; E and J Handley Collection

Simon Spero Exhibition, 2000, number 13

English Private Collection

Illustrated; Joseph M Handley, 18th Century English Transfer Printed Porcelain and Enamels, number 2.5 and colour plate III



24.
An extremely rare Worcester round bowl, of thinly potted form, with everted rim, printed, probably in Birmingham, in 'Smokey Primitive' style with Peeping Tom, the reverse with three sheep, the interior printed with classical ruins, 4 ½" diameter, circa 1755, no mark

Provenance; Geoffrey Capell Collection
Norman Stretton Collection
Dr Sonia Parkinson Collection
English Private Collection

Exhibited; Albert Amor Limited, 'The Engravings of Robert Hancock', 1991, number 36

The interior print to this bowl does not appear to be recorded



25.

A rare and important Worcester small cylindrical mug, with notched loop handle, printed in Liverpool in brick red with a head and shoulders portrait of 'George III King of Great Britain', titled on a ribbon and flanked by 'C' scrolls, flags, a cannon and a map of 'I Cuba' and 'Havannah', in a titled scroll, 3 1/3" high, circa 1762-63, no mark

Provenance; The Museum of New York

See 18th Century English Transfer-Printed Porcelain and Enamels, The Joseph M Handley Collection, No 1.15, for a bowl printed with George III and a view of Havannah, there listed as Worcester, but now classified as Derby

A few months after the Coronation of George III in September 1762, the Seven Years War, which had started in 1754, spread to the West Indies, and after Spain's alliance with the French, a British expedition of five warships and 4,000 troops set out in 1762 from Portsmouth to capture Cuba. The British arrived in June, and by August Havannah had surrendered. The Admiral of the Fleet, George Keppel, 3rd Earl of Albemarle, entered the city as a conquering new Governor, and took control of the whole western part of the island, opening up trade with the colonies. However, The Treaty of Paris was signed in February 1763, and Spain, to secure the return of Havannah, ceded its territory of La Florida to the British.

This mug records the capture of Cuba in 1762, shown by the small scroll shaped cartouche with the inscription 'I Cuba' and 'Havannah', showing the position of the island and a map

No comparable mug appears to be recorded



26.

A rare Worcester round porringer, the two leaf moulded loop handles with applied flower head, leaf and tendril upper terminals, the interior printed in black by Robert Hancock with *Les Garçons Chinois*, picked out in coloured enamels, the spirally fluted exterior painted with scattered leaves and buds, beneath an ozier moulded band, 7" diameter overall, circa 1757-58, no mark

Provenance; American Private Collection

This form is extremely rare in English porcelain



27.

A Worcester small tureen and cover, in the form of a cauliflower, the leaves picked out in yellow and pale green, 4 ½" wide, circa 1755-58, corresponding workman's marks in black enamel

Another tureen and cover of this form was exhibited A Celebration of 250 Years of Worcester Porcelain, Albert Amor Limited, 2001, number 18



28.
A Worcester 'Blind Earl' sweetmeat dish, moulded in relief with leaves, naturalistically picked out in green and yellow, with black veining, the stalk loop handle with rosebud terminal, brown line rim, 6 ¼" diameter overall, circa 1758, no mark

Provenance; English Private Collection



29.

A Worcester baluster shaped mug, with notched loop handle, superbly painted in coloured enamels in Oriental style with a long-tailed bird in a tree, and another on the ground, amidst flowering trees and 'banded' hedges, 4 ¼" high, circa 1755-58, no mark

Provenance; English Private Collection

See The Cohen Collection, Albert Amor Limited, 1992, number 46, for a teapot stand in this pattern, previously exhibited in our 1981 First Decade Exhibition, and then the only example we recorded in our archive



30.

A pair of Worcester 'Blind Ear' sweetmeat dishes, each twig loop handle with rosebud terminal, and moulded in relief with leaves, and painted in coloured enamels with a flower spray and scattered flowers, 6 ³/₈" diameter overall, circa 1760, no marks



31.

A rare Worcester tea bowl, coffee cup and saucer, each with indented rim, the cup with notched loop handle, finely painted in coloured enamels with bold flowers and leaves, including a variegated tulip, within a brown line border, circa 1757-58, no mark

Provenance; The R David Butti Collection, Bonhams, 10th May 2006, lot 50

The teapot and cover, from this single service, is illustrated by Franklin Barrett, Worcester Porcelain, plate 20B. A coffee cup and saucer from the service was exhibited as part of The Wills Collection, Albert Amor Limited, 1984, number 35



32.

An exceptionally fine Worcester teacup and saucer, the cup with loop handle, brilliantly painted in coloured enamels with bold sprays of flowers and fruits, the interior of the cup painted with a nut and leaves, within brown line borders, circa 1760, blue crossed swords and numeral 9 marks

This rare and lavish decoration imitates Chelsea decoration of this period, even down to the brown line rims



33.

A rare Worcester plate, painted in Japanese Arita style, possibly in the London atelier of James Giles, with a crane standing amidst bamboo, peony and prunus, and another in flight, the fluted border with gilt line rim, the underside painted with three flower sprays, 8 ¼" diameter, circa 1765-70, no mark

Provenance; Henry Vane, 2nd Earl of Darlington, then by descent through the Dukes of Cleveland to The Lords Barnard, Raby Castle. This plate was produced to supplement a service of Japanese Arita porcelain.

Crane Collection

John Bell Collection



34.

A rare Worcester faceted teacup, coffee cup and saucer, each cup with 'S' scroll handle, unusually painted in coloured enamels in the London atelier of James Giles with scattered purple flowers and leaves, the border with garlands of hops, alternating with three royal blue vertical bands, tied by six gilt bands, circa 1768-70, no marks

Provenance; John Bell Collection

See Gerald Coke, *In Search of James Giles*, page 184, number 12 (b) for a trio from this service



35.

A Worcester round bowl, the exterior painted in coloured enamels with exotic birds in wooded landscapes, within gilt fan shaped panels, with flowers and leaves, and with roundels of butterflies and other insects, on a powder blue ground, the interior painted with a ladybird, a butterfly and another winged insect, 5 $\frac{3}{4}$ " diameter, circa 1765, no mark

Provenance; John Bell Collection



36.

A rare Worcester round bowl, from the Bodenham Service, finely painted in coloured enamels with Chinese figures in landscapes, within gilt cartouches, and with mirror shaped panels of puce and iron red flowers and leaves, on a blue scale ground, 6" diameter, circa 1768, rare blue painted B mark

Provenance; Earl Spencer, Althorp House, Northamptonshire

One other bowl in this pattern is known, in the Frank Lloyd Collection, British Museum



37.
A Worcester baluster shaped coffee pot and domed cover, with 'S' scroll handle and flower knop, finely painted in Chinese Mandarin style with figures around a table in a garden, a pavilion beyond, within gilt scroll ground borders, panelled with puce monochrome landscapes, gilt line borders, 9 ½" high, circa 1765-70, no mark

Provenance; Hugh Langmead Collection
Swiss Private Collection



38.

A pair of Worcester plates, each painted in coloured enamels in the London atelier of James Giles with fruits and leaves, the border with three berried branches with exotic birds, the indented rim with a gilt band, 8 $\frac{3}{4}$ " diameter, circa 1765-70, no mark

Provenance; With Jas A Lewis, New York

See Stephen Hanscombe, James Giles, China and Glass Painter, number 59, for a similarly decorated plate



39.
A Worcester plate, painted in coloured enamels in the London atelier of James Giles with a cluster of fruits and leaves, the fluted border with three pairs of confronting birds in branches, gilt line rim, 8 ¼" diameter, circa 1765-70, no mark

See Stephen Hanscombe, James Giles, China and Glass Painter, figure 59, for a related plate



40.

A rare Worcester oval spoon tray, moulded in 'Blind Earl' style with rose leaves, and painted in coloured enamels in the London atelier of James Giles with a peach and a cut peach, flowers and leaves, and a butterfly, a moth and two insects, the two green glazed loop handles each in the form of a stalk, brown line rim, 6 $\frac{5}{8}$ " wide, circa 1768, no mark



41.

A rare Worcester oval spoon tray, moulded in 'Blind Earl' style with rose leaves, and painted in coloured enamels in the London atelier of James Giles with flowers, a nut and a fig, a butterfly and two other insects, the two green glazed loop handles each in the form of a stalk, brown line rim, 6 $\frac{5}{8}$ " wide, circa 1768, no mark



42.

A rare Worcester wine taster, of half peach form, after a Chinese porcelain original, the twig shaped handle with peach blossom and leaves issuing across the base and sides, picked out in coloured enamels, on a basket moulded ground, the interior painted in famille verte palette with a flower and an insect, within a flower and leaf border, 4" diameter overall, circa 1765-68, no mark

See John Sandon, *The Dictionary of Worcester Porcelain*, page 368, for details of this rare form



43.

A fine Worcester cabbage leaf moulded mask jug, with flattened 'C' scroll handle, brilliantly painted in carmine pink with Chinese river landscapes, within three large purple and gilt bordered quatrefoil panels, on a lemon yellow ground painted in Japanese Kakiemon style with flowers and leaves, beneath an orange and gilt scroll and flower head band, and stiff leaf moulded rim picked out in coloured enamels, 8 ¾" high, circa 1760-65, no mark

Provenance; Mr and Mrs Douglas Sidders Collection, and by family descent

See 18th Century English Porcelain From Renowned Collections, Albert Amor Limited, 2000, the number 18, for a similar jug

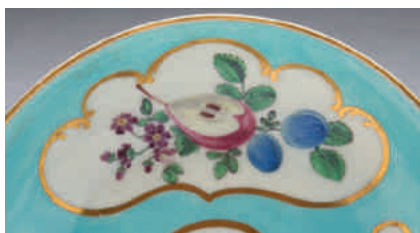


44.

A rare Worcester teacup and saucer, the cup with loop handle, painted in coloured enamels with exotic birds in branches, within gilt 'C' scroll cartouches, and with smaller panels of butterflies and other insects, on a yellow scale ground, gilt line rims, circa 1768-70, blue crossed swords and numeral 9 marks

Provenance; Crane Collection
John Bell Collection

Yellow scale grounds were produced at Worcester for a short period from circa 1768-70, and are extremely rare



45.

A rare Worcester teacup and saucer, the cup with loop handle, superbly painted in coloured enamels in the London atelier of James Giles with clusters of flowers, fruits and leaves, including a cut apple, within shaped gilt cartouches, on a turquoise ground, gilt line rims, circa 1770, underglaze blue crossed swords marks and numeral 9

Provenance; Rous Lench Collection

John Bell Collection, acquired from Albert Amor Limited

Exhibited; Dreweatt Neate, 18th Century English Porcelain Loan Exhibition, 1996, number 73

See Gerald Coke, *In Search of James Giles*, colour plate VII, for a similar cup and saucer. See also *The Elegant Porcelain of James Giles*, Albert Amor Limited, 1983, number 1, for a bowl from this service



46.
An exceptional Worcester large coffee cup and saucer, the cup with notched loop handle, particularly finely painted in coloured enamels with 'Chinese musicians', within lobed cartouches edged with gilt 'C' scrolls, on a blue scale ground, the centre of the saucer and the interior of the cup with a detailed broad gilt band, circa 1768, blue fret mark

Provenance; Zorensky Collection
John Bell Collection

Illustrated; Worcester Porcelain, The Zorensky Collection, figure 333

This cup and saucer relates to the Thompson tea service in the Victoria and Albert Museum. The coffee pot from the service is in the Frank Lloyd Collection, British Museum



47.

A Worcester plate, superbly painted in coloured enamels by Jefferyes Hamett O'Neale with the Fable of 'The Ass and the Boar', within a gilt scroll and diaper roundel, the wet blue ground fluted border with gilt dentil rim, 7 $\frac{5}{8}$ " diameter, circa 1768, blue fret mark

Provenance; W H Pitts Collection
John Bell Collection



48.
A Worcester plate, superbly painted in coloured enamels by Jefferyes Hamett O'Neale with the Fable of 'The Fox and the Boar', within a gilt scroll and diaper roundel, the wet blue ground fluted border with gilt dentil rim, 7 ⁵/₈" diameter, circa 1768, blue fret mark

Provenance; Mrs V M Rayner, Richmond, Surrey, sold Sotheby's London, 17th March 1950, part lot 25
The Bastard Collection
W H Pitts Collection
John Bell Collection



49.

An extremely rare Worcester tea bowl and saucer, from the celebrated Lord Dudley Service, of thinly potted form, superbly painted in coloured enamels in the London atelier of James Giles with Watteauesque figures playing musical instruments, within gilt fan shaped panels, bordered by flowers and leaves, alternating with roundels of insects, on a powder blue ground, gilt dentil rims, circa 1768, no mark

Provenance; Sotheby's, Billingshurst, June 1996
John Bell Collection

From a service believed to have belonged to the Earl of Dudley in the 19th century. The sucrier and cover from the service is in the H R Marshall Collection, Ashmolean Museum, Oxford



50.
An extremely rare pair of Worcester figures of gardeners, in the white, each standing, he wearing a tricorne hat, and holding flowers in a pot in his right arm, and resting his left hand on a spade, and she wearing a wide brimmed hat, and holding a flower in her right hand, and carrying a basket of flowers in her left, each mound base applied with flowers and leaves, 6 ⁵/₈" high, circa 1770, no marks

Provenance; Rous Lench Collection
Zorensky Collection
Mellor Cobham Collection

Illustrated; Worcester Porcelain, The Zorensky Collection, figure 390

Worcester figures are of the greatest rarity. Another pair of this model, also in the white, is in the H R Marshall Collection, Ashmolean Museum, Oxford

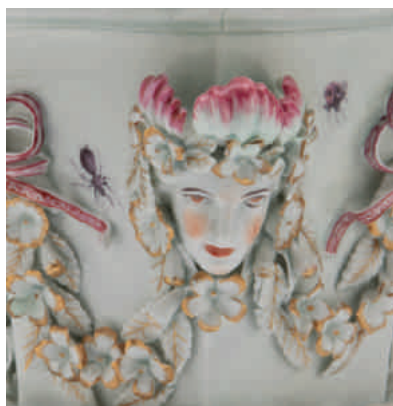


51.

An extremely rare pair of Worcester figures of Turks, each standing, he wearing a turban, richly decorated iron red ground robe, and fur trimmed turquoise coat, his left hand resting on a scimitar, and she wearing a plumed turban, turquoise ground dress, and fur trimmed coat, each on flower and leaf applied mound base, 5 ⁵/₈" high overall, circa 1770, no marks

Provenance; Rous Lench Collection
Zorensky Collection
Mellor Cobham Collection

Illustrated; Worcester Porcelain, The Zorensky Collection, figure 387



52.

A rare pair of Worcester flared hexagonal 'frill' vases, probably modelled by John Toulouse, each with two female mask handles, united by ribbon tied garlands of applied flowers and leaves, picked out in puce and gilt, above a stiff leaf moulded band, and painted in coloured enamels with sprays of flowers and leaves, and scattered insects, the pierced basketwork rim applied with flower heads, picked out in puce and green, 8 ¼" high, circa 1770, no marks

Provenance; Rous Lench Collection
Zorensky Collection
Mellor Cobham Collection

Illustrated; Worcester Porcelain, The Zorensky Collecton, figure 397



53.
A pair of Worcester pierced oval baskets, each with two twig loop handles, with applied flower and leaf terminals, richly decorated in Japanese style with the Pavilion pattern, the exterior applied with flower heads, picked out in puce and green, 7 ½" wide overall, circa 1770-72, no marks

Provenance; Mellor Cobham Collection

Exhibited; The International Ceramics Fair and Seminar, Loan Exhibition, 1999, number 77 (one basket)



54.
A Worcester plate, from the Lord Craven Service, painted in coloured enamels in the London atelier of James Giles with a roundel of flowers and leaves, and with radiating flowers and leaves, within gilt flower, leaf and trellis cartouches and mirror shaped panels, on a blue scale ground, the indented border with gilt line rim, 8 ¾" diameter, circa 1772, blue fret mark

Provenance; Mrs E M Kneller Collection
Mellor Cobham Collection

Exhibited; A Celebration 250 Years of Worcester Porcelain, 2001, Albert Amor Limited, number 48



55.

A Worcester plate, painted in coloured enamels in the London atelier of James Giles with the Lady Mary Wortley Montagu Pattern, with exotic birds in wooded landscapes, within gilt flower, leaf and trellis cartouches, and with mirror shaped panels of flowers and leaves, on a blue scale ground, the indented border with gilt line rim, 8 ¾" diameter, circa 1770, blue fret mark

This is version three of The Lady Mary Wortley Montagu Pattern

Provenance; Mrs E M Kneller Collection
Mellor Cobham Collection

Exhibited; A Celebration 250 Years of Worcester Porcelain, 2001, Albert Amor Limited, number 47



56.

A Worcester yellow ground junket dish, painted in coloured enamels with a central roundel of flowers and leaves, and three similar cartouches, with puce scroll moulded borders, the indented rim with a band of flowers and leaves, 9" diameter, circa 1770, no mark

Provenance; Mellor Cobham Collection

57.

A Worcester ovoid teapot and cover, with loop handle, faceted spout and flower and leaf knop, boldly painted in coloured enamels with exotic birds in wooded landscapes, within gilt 'C' scroll cartouches, and with smaller panels of butterflies and other insects, on a blue scale ground, 5 ½" high, circa 1770, blue fret mark

Provenance;
With Robyn Robb

English Private Collection





58.

A Worcester teacup and saucer, the cup with loop handle, painted in coloured enamels in the London atelier of James Giles with the Sheridan pattern of a spray of flowers and leaves, including a divergent tulip, within vines entwined with a brown band, gilt dentil rims, circa 1770, underglaze blue crossed swords and numeral 9 marks

Provenance; John Gough Collection



59.

A Worcester leaf shaped dish, with stalk loop handle, painted in shades of green in the London atelier of James Giles with a spray of flowers and leaves, including a divergent tulip, and scattered flowers and leaves, the handle picked out in gilt, 7 $\frac{3}{4}$ " long, circa 1772, no mark



60.
A Worcester plate, painted in Chinese famille verte palette with the 'Bishop Sumner' Pattern, the underside painted in iron red and gilt with three flower sprays, 8 ¾" diameter, circa 1772-75, gilt crescent mark



61.

A Worcester fluted teacup, coffee cup and saucer, each cup with ear shaped handle, painted in green and iron red with garlands of hops, alternating with panels of purple monochrome flowers, and with turquoise ground 'pearl' bands, the purple ground borders with flowers and diaper, within gilt cartouches, gilt dentil rims, circa 1770-75, gilt crescent marks

Provenance; John Bell Collection



62.

A Worcester faceted coffee cup and saucer, the cup with loop handle, decorated in gilt with garlands of flowers and leaves, on a puce and turquoise striped ground, within gilt line and dentil borders, underglaze blue fret marks, the porcelain circa 1770, the decoration later

Provenance; Rous Lench Collection
Sir Jeremy Lever Collection
John Bell Collection



63.

A Worcester plate, from the Mrs Arthur James Service, painted in coloured enamels with exotic birds in a wooded landscape, butterflies and other insects, with a purple 'shagreen' and pink chevron panelled border, interspersed with turquoise diaper and gilt flower and leaf, gilt dentil rim, 8 ½" diameter, circa 1775, no mark

Provenance; R David Butti Collection
John Bell Collection

It is believed that only one dessert service and one tea service were made in this lavish pattern



64.

A Worcester faceted teapot and domed cover, with loop handle and flower and leaf knob, decorated in gilt with garlands of flowers and leaves, on a puce and turquoise striped ground, within gilt line and dentil borders, 5 ¼" high, underglaze blue fret mark, the porcelain circa 1770, the decoration later

Provenance; Sir Jeremy Lever Collection
John Bell Collection

A coffee cup and saucer in this pattern was in the Zorensky Collection

It is interesting to note that as recently as 1983, when Gerald Coke wrote his book *In Search of James Giles*, this pattern was still considered the work of the Giles atelier, and highly prized



65.

A Worcester fluted teacup, coffee cup and saucer, each cup with ear shaped handle, painted in green and iron red with garlands of hops, alternating with bright blue and gilt trellis, within pink ground diaper borders, gilt line rims, circa 1775, no marks

Provenance; The Cottam Collection
John Bell Collection



66.

A Worcester pierced oval basket, the two twig loop handles with applied flower and leaf terminals, painted in coloured enamels with flowers and leaves, the yellow ground exterior applied with puce and green flower heads, 7 ¼" wide overall, circa 1772, no mark

Provenance; John Bell Collection



67.

A rare pair of Worcester small cylindrical mugs, each with ear shaped handle, and finely decorated in gilt, one with the initials 'J.B' and the other 'C.B', within an oval turquoise 'shagreen' and gilt flower, leaf and 'C' scroll cartouche, and painted in coloured enamels with garlands of flowers and leaves, the blue ground rim decorated in gilt with a flower panelled diaper band, 3" high, circa 1775, underglaze blue crescent marks

Provenance; Rous Lench Collection
John Bell Collection

Illustrated; Rissik Marshall, plate 15, number 259

Exhibited; Worcester Porcelain Bicentenary Exhibition, 1951



68.

A Worcester fluted round sucrier and domed cover, with flower and leaf knop, painted in coloured enamels with garlands of flowers and leaves, and finely gilded with monogram 'R C', within turquoise 'shagreen' and gilt oval flower and leaf scroll cartouches, the blue ground borders decorated in gilt with flowers and leaves, 4 $\frac{3}{4}$ " high, circa 1775-80, underglaze blue crescent mark

Provenance; John Bell Collection



69.

A Worcester faceted teacup and saucer, the cup with loop handle, painted in Japanese Kakiemon style with the Two Quail pattern, within scrolling turquoise borders, with gilt 'C' scrolls and trailing flowers and leaves, circa 1772, no mark

Provenance; John Bell Collection



70.
A Worcester heart shaped dish, painted in coloured enamels in the London atelier of James Giles with the Lady Mary Wortley Montagu Pattern, with a spray of flowers and leaves, within a gilt band, the blue scale ground with four exotic birds, each in a wooded landscape, within gilt flower, leaf and 'C' scroll cartouches, gilt line rim, 10" wide, circa 1770, blue fret mark

Provenance; T Grant Dixon Collection
John Bell Collection

This is version two of The Lady Mary Wortley Montagu Pattern



71.

A very rare Worcester plate, from the Hope Edwardes Service, painted in coloured enamels in the London atelier of James Giles with a cut pear, other fruits, flowers and leaves, the cornucopia shaped claret ground border decorated in gilt with cornucopiae of flowers and leaves, the indented border with gilt line rim, 9" diameter, circa 1770, no mark

Provenance; Mrs E M Kneller Collection
John Bell Collection

From the celebrated service sold at Christies, London, 25th April 1901



72.
A Worcester lozenge shaped dish, painted in coloured enamels with exotic birds in a wooded landscape, and birds and insects in flight, the fluted border with a basket moulded band, and gilt dentil rim, 9 1/4" wide, circa 1772, no mark

Provenance; John Bell Collection



73.

An extremely rare Worcester garniture of three tapering sided hexagonal vases and domed covers, each with pointed knop, richly decorated in Japanese Kakiemon style with panels of exotic birds amidst flowering branches, alternating with orange ground panels, with iron red mons, on a gilt diaper ground, each shoulder with panels of flowers and leaves, alternating with orange 'shagreen' panels, each neck with gilt 'C' scrolls and diaper panels, 15 ¼" high, circa 1770-75, no marks

We do not record another Worcester three vase garniture decorated in this rich Kakiemon style in our archive. A single Worcester large vase, with related decoration, is in the H R Marshall Collection, Ashmolean Museum, Oxford



74.
A Worcester fluted saucer dish, centrally painted in coloured enamels with scattered flowers, within a roundel of turquoise, black and grey 'pearls', the border with radiating purple flowers and leaves, within puce vase shaped panels, alternating with green and iron red festoons of hops, the lilac ground border with gilt diaper panels, alternating with purple flowers and leaves, gilt dentil rim, 7 1/8" diameter, circa 1775, no mark

See Treasures From Toronto II, Albert Amor Limited, 1994, number 66, for a sucrier, cover and stand in this rare pattern



75.

A Worcester plate, from the Mrs Arthur James Service, painted in coloured enamels with exotic birds in a wooded landscape, butterflies and other insects, within a purple 'shagreen' and pink chevron panelled border, interspersed with turquoise diaper and gilt flower and leaf cartouches, gilt dentil rim, 8 ½" diameter, circa 1775, no mark

It is believed that only one dessert service and one tea service were made in this lavish pattern



76.

A Worcester plate, painted in coloured enamels in the London atelier of James Giles with the Lady Mary Wortley Montagu Pattern, with a spray of flowers and leaves, within a gilt roundel, the blue scale ground with three exotic birds, in a wooded landscape, each within a gilt flower, leaf and 'C' scroll cartouche, the indented border with gilt line rim, 8 $\frac{3}{4}$ " diameter, circa 1770, blue fret mark

This is version two of The Lady Mary Wortley Montagu Pattern



77.

A rare Worcester reeded teacup, coffee cup and saucer, from the Mrs Arthur James Service, each cup with ear shaped handle, painted in coloured enamels with exotic birds in wooded landscapes, butterflies and other insects, within purple 'shagreen' and pink chevron panelled borders, interspersed with turquoise diaper and gilt flower and leaf cartouches, gilt dentil rim, circa 1775-80, no mark

Provenance; Phelps Collection, Christie's London, 1st October 1984, lot 142

Zorensky Collection, Bonhams, 16th March 2004, lot 215

It is believed that only one dessert service and one tea and coffee service was made in this lavish pattern. Mrs Arthur James was a celebrated Edwardian hostess, who owned this service

A further trio from this service was exhibited as part of The Wills Collection, Albert Amor Limited, 1984, number 89



78.
A rare Worcester ogee shaped chocolate cup and saucer, the cup with two pierced scroll handles, boldly painted in coloured enamels with exotic birds in wooded landscapes, within gilt 'C' scroll cartouches, and with smaller panels of butterflies and other insects, on a blue scale ground, circa 1770, blue fret marks

Provenance; Canadian Private Collection
English Private Collection

Exhibited; Treasures From Toronto, III, Albert Amor Limited, 2012, number 45



79.

A rare Worcester coffee cup and saucer, the cup with entwined loop handle, moulded in relief with scrolling scolopendrium leaves, picked out in green, with black and gilt veining, and painted in coloured enamels with scattered flowers and leaves, brown line rims, circa 1772, no marks



80.

A Worcester coffee cup and saucer from the Stormont Service, the cup with entwined loop handle with leaf terminals, painted in puce with drapery swags, picked out in gilt, and suspended from bows, gilt dentil borders, circa 1775, saucer with blue crossed swords and numeral 9 mark

Two versions of this distinctive pattern are known, the version in turquoise and gilt, believed to have been ordered by the 7th Viscount Stormont, and this puce version, each almost certainly a single service

81.

A Worcester coffee cup and saucer, from the Stormont Service, the cup with entwined loop handle with leaf terminals, painted in puce with drapery swags, picked out in gilt, and suspended from bows, gilt dentil borders, circa 1775, saucer with blue crossed swords and numeral 9 mark

Two versions of this distinctive pattern are known, the version in turquoise and gilt, believed to have been ordered by the 7th Viscount Stormont, and this puce version, each almost certainly a single service





82.

An exceptionally rare Worcester garniture of three pot pourri vases and covers, comprising a globular vase and domed cover, and a pair of urn shaped vases and domed covers, each with female mask handles, united by garlands of finely modelled applied flowers and leaves, and painted in 'dry blue' enamel with sprays of flowers and leaves, each cover with bird knop and applied with flowers and leaves, on knopped stem and round base, with gilt dentil borders, 16 3/8" high overall, circa 1772, no marks

Provenance; Christies, London, 7th October 1996, lot 182

Zorensky Collection

Mellor Cobham Collection



83.

A rare Worcester oval sauce tureen stand, from the celebrated Duke of Gloucester Service, brilliantly painted in coloured enamels with a cluster of fruits and leaves, the border painted with cartouches of insects, within a green and gilt border, 9" long, circa 1770, gold crescent mark

Provenance; Mellor Cobham Collection

From the renowned service commissioned by William Henry, Duke of Gloucester (1743-1805) – the first documented Worcester Royal service, and often considered the finest English porcelain service of the 18th Century



84.

A rare Worcester deep plate, from the celebrated Duke of Gloucester Service, brilliantly painted in coloured enamels with a cluster of fruits and leaves, and two insects, the border painted with cartouches of insects, alternating with fruits, within a green rim, 8 $\frac{3}{4}$ " diameter, circa 1770, gold crescent mark

Provenance; Sir Jeremy Lever Collection
Mellor Cobham Collection

From the renowned service commissioned by William Henry, Duke of Gloucester (1743-1805) – the first documented Worcester Royal service, and often considered the finest English porcelain service of the 18th Century



85.
A Worcester plate, painted in coloured enamels in the London atelier of James Giles with a fig, three cherries and leaves, the fluted border with three sprigs of rose hips, sloe berries and cut plums, and with a butterfly and two insects, gilt line rim, 7 ¼" diameter, circa 177, no mark



86.

A Worcester hexagonal lozenge shaped spoon tray, painted in coloured enamels with flowers, within a turquoise, black and grey 'pearl' oval panel, the border with radiating purple flowers and leaves, within puce vase shaped panels, alternating with green and iron red festoons of hops, the lilac ground border with gilt diaper panels, alternating with purple flowers and leaves, gilt dentil rim, 6" wide, circa 1775, no mark

Provenance; F Severne Mackenna Collection

Illustrated; F S Mackenna, Worcester Porcelain, plate 39, number 50

One of the rarer and most attractive 'Holly Berry' patterns





87.

An important pair Worcester large hexagonal vases and domed covers, each with pointed knob, brilliantly painted in coloured enamels with exotic birds in wooded landscapes, within gilt 'C' scroll, leaf and diaper cartouches, and with smaller panels of butterflies and other winged insects, on a blue scale ground, each neck painted in underglaze blue with a flower head and leaf scroll band, 17" high, circa 1770, blue fret marks

Provenance; Australian Private Collection
With Graham and Oxley, London
Mellor Cobham Collection

This is the largest size of Worcester hexagonal vase and cover, and provides the perfect surface for the very finest Worcester exotic bird and insect painting



88.
A rare Worcester large round punch bowl, the interior painted in coloured enamels with exotic birds in a wooded landscape, within a blue and gilt flower head and leaf scroll roundel, and with blue and gilt flower head medallions alternating with coloured scattered flowers and leaves, two butterflies and a bug, within a blue and gilt leaf scroll and diaper band, the exterior superbly painted with exotic birds in wooded landscapes, within three gilt 'C' scroll cartouches, and with smaller cartouches of puce flowers and leaves, and mirror shaped panels of birds, gilt line rim, 11 ¼" diameter, circa 1770, blue fret mark

Provenance; Mellor Cobham Collection

89.

A Worcester fluted barrel shaped teapot and flat cover, with ear shaped handle and flower and leaf knop, painted in coloured enamels with trailing flowers and leaves, above a turquoise 'shagreen' band, with gilt 'C' scrolls, the blue ground rim with gilt flower heads and 'C' scrolls, 5 ¼" high, circa 1780, underglaze blue crescent mark

See Treasures From Toronto II, Albert Amor Limited, 1994, number 67, for a tea canister and cover in this pattern. A service in this pattern was presented to Her Late Majesty Queen Elizabeth II by the people of Cheltenham on the occasion of her marriage



90.

A Worcester fluted ovoid tea canister and domed cover, with flower and leaf knop, painted in coloured enamels with trailing flowers and leaves, above a turquoise 'shagreen' band, with gilt 'C' scrolls, the blue ground rim with gilt flower heads and 'C' scrolls, 6 ½" high, circa 1780, underglaze blue crescent mark

91.

A Worcester fluted baluster shaped milk jug, with ear shaped handle, painted in coloured enamels with trailing flowers and leaves, above a turquoise 'shagreen' band, with gilt 'C' scrolls, the blue ground rim with gilt flower head and 'C' scrolls, 4" high, circa 1780, underglaze blue crescent mark



92.

A Worcester fluted teacup and saucer, the cup with ear shaped handle, painted in coloured enamels with trailing flowers and leaves, above turquoise 'shagreen' bands, with gilt 'C' scrolls, the blue ground rims with gilt flower heads and 'C' scrolls, circa 1780, underglaze blue crescent marks

93.

A Worcester fluted coffee cup and saucer, the cup with ear shaped handle, painted in coloured enamels with trailing flowers and leaves, above turquoise 'shagreen' bands, with gilt 'C' scrolls, the blue ground rims with gilt flower heads and 'C' scrolls, circa 1780, underglaze blue crescent marks



94.

A rare Worcester dessert service, each piece painted in coloured enamels in Sevres style with a cluster of fruits, leaves and an upturned basket, and with scattered flower sprays, within a scrolling blue and gilt cailloute border, circa 1780, underglaze blue crescent and script W marks, comprising;

A pair of oval sauce tureens, covers and stands, each with pinecone knop

Four shell shaped dishes

A lobed oval dish

Nine fluted lozenge shaped dishes

Twenty six dessert plates

See Worcester Porcelain, The Zorenky Collection, figure 319, for a single plate in this rare pattern



95.

A rare Worcester fluted teacup and saucer, the cup with ear shaped handle, painted in green and red with garlands of hops, alternating with bands of purple monochrome flowers and leaves, and with turquoise ground bands of 'pearls', within purple ground borders, with flowers and diaper, within gilt cartouches, gilt dentil rims, circa 1775, gilt crescent marks



96.

A Worcester fluted teacup, coffee cup and saucer, each cup with ear shaped handle, painted in green and red with trailing hops, and gilt C' scrolls, within pink herringbone borders, gilt line rims, circa 1770-75, no marks



97.

A Worcester fluted coffee cup and saucer, the cup with ear shaped handle, painted in green and iron red with garlands of hops, alternating with three bright blue and gilt trellis panels, within pink ground diaper borders, edged in gilt, circa 1775, no marks



98.
A pair of Worcester oval twelve lobed dishes, each painted in Japanese Kakiemon style with the Sir Joshua Reynolds pattern, the scrolling blue ground border decorated in gilt with leaves, within 'C' scroll cartouches, on a diaper ground, gilt line rim, 11 1/4" wide, circa 1772, underglaze blue script W marks



99.
A Worcester ovoid milk jug and cover, with loop handle and flower and leaf knop, painted in coloured enamels with clusters of 'spotted' fruits and leaves, and various winged insects, the scrolling apple green ground with gilt 'C' scroll borders, gilt line rims, 5 ¼" high, circa 1775, no mark

100.
A Worcester round bowl, the exterior painted in coloured enamels with clusters of 'spotted' fruits and leaves, and numerous winged insects, beneath a scrolling apple green border, edged with gilt 'C' scrolls, gilt line rim, 6 ½" diameter, circa 1775, no mark

101.
A Worcester teacup and saucer, the cup with loop handle, painted in coloured enamels with clusters of 'spotted' fruits and leaves, and various winged insects, the scrolling green ground with gilt 'C' scroll borders, gilt line rims, circa 1775, underglaze blue crossed swords and numeral 9 marks



102.

A Flight, Barr and Barr Worcester plate, from the celebrated Stowe Service, finely painted in coloured enamels with the arms of Richard 2nd Marquess of Buckingham, and his wife Anna Eliza, above the motto 'TEMPLA QUAM DILECTA', the broad peach ground border decorated in gilt with vases and leaf scrolls, 9 1/2" diameter, circa 1813, impressed and printed marks

Provenance; From the service commissioned by Richard, Earl Temple of Stowe, 2nd Marquess of Buckingham (1776-1839), and by descent to Richard, 2nd Duke of Buckingham and Chandos (1797-1861), until sold Stowe Park Sale, Christies, 23rd August 1848, lot 956 (186 pieces) £29.18.00

John Bell Collection



WWW.ALBERTAMOR.CO.UK